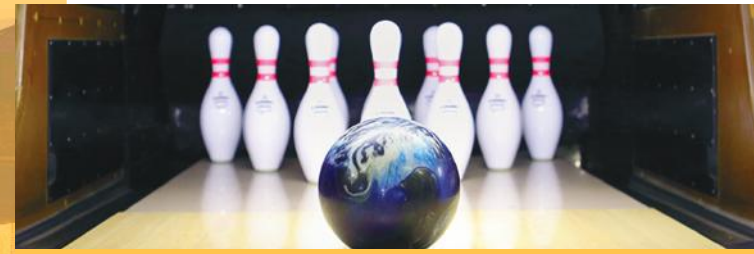


Explore Wexford and Beyond.....

Take a short break in Ireland's Ancient East and visit places filled with quirky and memorable experiences. With the maps as your guide and itineraries as your inspiration, discover a region of legends and stories, from ancient times to modern day - a place brimming with culture, attractions, festivals and fun. Your adventure through Ireland's Ancient East awaits!

County Wexford & the Southeast



Leisure MaxWexford

Perfect for a wet or dry day, bowling, sumo wrestling, gladiators, indoor play area, zorb football, gravity tower with zip wire, you could spend hours of fun here.

www.leisuremax.ie



IOAC (Rosslare)

Activities include High Ropes park - which consists of 2 levels of high rope's 4m and 7m, Jacob's Ladder and Crate stacking. In all of these activities the participant is Fully hardened and supervised by full qualified high ropes staff. The other activities that we offer at the IOAC include, a Low Ropes Challenge Course, Battlezone Archery tag, Airsoft target range, Archery range as well as Kayaking or Raft building on our purpose-built Activity Lake.

www.ioac.ie



Pirates CoveCourtown

Pirates Cove in Courtown Harbour. Adventure Golf takes intrepid explorers through winding caves, a shipwrecked galleon, and a thundering waterfall. You will also find bumper boats, a soft play area, bubble rollers and electric kids go karts, along with 4 bowling lanes.

www.piratescove.ie



Quad BikingClonroche

Quad Attack in Co. Wexford is exhilarating good fun..... Well established as one of the best Quad Biking facilities in the country. Quad Attack provide adventurous all weather cross-country driving fun for everybody from 6 years upwards.

www.quadattack.ie



Johnstown Castle

With one of the most comprehensive displays of farming and rural life in the country, the Irish Agricultural Museum and Johnstown Castle Gardens make a wonderful day out for all the family - whatever the weather. The beautifully maintained ornamental gardens surrounding the castle extend to 40 hectares and feature three lakes, a walled garden and a resident family of peacocks.

www.johnstowncastle.ie



Blackwater Footgolf Course ...Blackwater

This course is unique as it's the first to be built solely for the unusual past time of Footgolf. For a 3 or 4 ball game it usually takes up to an hour to play, with the holes having varying lengths of 40 and 90 yards. A fun and different afternoon out!

Tel: 0873497201



Courtown Adventure Courtown

Fun and challenging day out filled with adventurous activities! You can choose between High Ropes course, Laser Tag, orienteering and much more. Whether you would like to test your sharp shooting skills on our Archery range or Zip Line down from the Tower; or simply venture in the forest with the help of a Orienteering map, our Adventure Centre is a perfect place to be.

www.courtownadventure.ie



Bloomfield Farm Equestrian Centre ...Enniscorthy

Ideally located 2km from Enniscorthy Town on main N30 New Ross Road. Fully Insured and Aire approved Riding School & Trekking. Enjoy riding at Bloomfield with our team of friendly, outgoing instructors who are here to offer their knowledge and advice.

Tel: 086 374 3557



Go PaddleEnniscorthy

Slaney Adventure is on our doorstep. Slaney Adventure is an established mobile Kayak & Canoe service based in the South East.

www.gopaddle.ie



Secret Valley Wildlife Park ...Clonroche

Award-winning Secret Valley Wildlife Park is the only Wildlife Park in the South East of Ireland. Donkeys, Llamas, Alpaca, Ponies and Goats fill the paddocks outside. A purpose-built animal haven, you can meet the Meerkats, Corsac foxes, Guinea Pigs, Lizards, Raccoons, Prairie Dogs, Tortoise and Lemurs and lots more. Whatever the weather, you will have a ball discovering Secret Valley.

www.secretvalley.ie



Blackwater Open FarmBlackwater

For a fun memorable day for all the family, meet the animals from pigs, cows, sheep, horses etc, play in the playground or indoor soft fun zone, ride the tractors and enjoy a bite to eat in the restaurant.

www.blackwateropenfarm.ie



Wells HouseKilmuckridge

Waiting to be explored is Wells House & Gardens, a great Victorian House and Gardens in the heart of Wexford. Wells House has something for all generations to enjoy and share! Woodland fairy walks, archery, falconry, playground and café.

www.wellshouse.ie



EXPLORE WEXFORD & THE SOUTH EAST



..while staying at the
Riverside Park Hotel & Leisure Club

RIVERSIDE PARK
hotel & leisure club
★★★★



Riverside Park Hotel & Leisure Club

The Promenade Enniscorthy Co. Wexford
T: 053 92 37800 F: 053 92 37900

E. info@riversideparkhotel.com www.riversideparkhotel.com



Irish National Heritage Park ...N11 towards Wexford

Begin an unforgettable journey through Ireland's past at our award winning Heritage Centre. Explore reconstructed historical sites depicting life in Ancient Ireland, located on the picturesque surroundings of the River Slaney. Activities for kids include: Trials of Tuan, Activity Scramble Archery (Seasonal), Adventure Playground

www.inhp.com



National 1798 Centre ...Enniscorthy

This award Rebellion Centre offers an insight into the birth of democracy in Ireland. Meet General Lake, the croppy boy, the blacksmith and miles byrne and learn in gruesome detail how some 20,000 insurgents faced the might of 10,000 well trained and well-armed Crown Forces.

www.knightsandrebels.ie



Kia Ora Mini Farm

Kia Ora Mini Farm is an award winning open farm in Gorey, Co. Wexford, which along with many animals that visitors can pet and hold, has some fantastic attractions such as real diggers visitors can operate, a fire engine ride with fun sing along songs, a crazy maze, giant buzz off, go-karts, milking cow and much more!

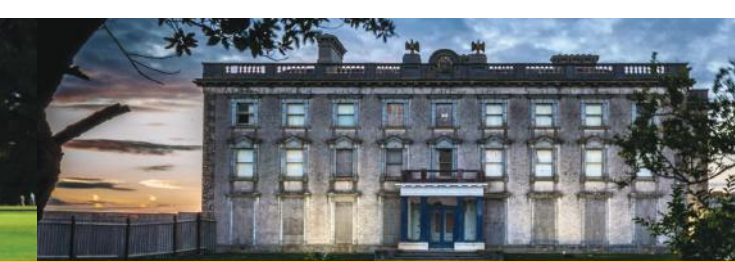
www.kiaoraminifarm.ie



Golfing in Wexford

Wexford is renowned for its golf courses, Enniscorthy, Bunclody, Wexford, St Helens are some of the golf courses we can organise discounts for you.

Enniscorthy also has a pitch and putt course located in walking distance from the Riverside.



Loftus Hall ...Hook Head

Loftus Hall... the most haunted house in Ireland. Visit Loftus Hall and take our 45 minute interactive guided tour through the ground floor of this abandoned haunted mansion. Hear all about the grim, and often gruesome, history; and get the chance to experience "The Legend of Loftus Hall".

www.loftushall.ie



Fr Murphy Centre ...Boolavogue Enniscorthy

In a tranquil rural setting, this house and farmyard were once home to Fr. Murphy, immortalised in the popular ballad, "Boolavogue". Fr Murphy got caught up in the 1798 Rebellion and was killed by Crown forces after a military tribunal. Here, the house and yard have been restored and span a 250- year period embracing both the historical and rural aspects of the area



Tintern Abbey

Tintern Abbey was founded c. 1200 and was home to the Cistercian monks for centuries. After the dissolution of the religious houses the Abbey came into the possession of the Colclough family. Knights, monks and scoundrels, law makers, law breakers and custodians, Tintern Abbey had them all and this historic place is well worth a visit. Enjoy a tour of the Abbey and the beautiful Colclough gardens or explore the woodland trails.

see www.heritageireland.ie for more



Dunbrody Famine ShipNew Ross

Explore the spectacular Dunbrody Famine Ship above and below deck, step back in time as costumed performers set the scene for a journey that transformed the lives of thousands and be immersed in the sights and sounds of a real life famine ship.

www.dunbrody.com



The Promenade Walk

Enjoy a 5km walk down the promenade where you will find lots of wildlife and fauna, there are benches along the way to enjoy the River Slaney or green areas for a family picnic.



John F. Kennedy Park & ArboretumNew Ross

Dedicated to the memory of John Fitzgerald Kennedy, President of the United States from 1960 to 1963, the Arboretum is a plant collection of international standing. It covers 252 hectares (623 acres). It contains 4,500 types of trees and shrubs from all temperate regions of the world, planted in botanical sequence. Play-ground and picnic area with ponds and woodland walks.
www.heritageireland.ie



Greyhound Racing Stadium ...Enniscorthy

Every Monday & Thursday night from 8pm, enjoy greyhound racing in Enniscorthy Greyhound Stadium. Great Night for the whole family.

Discounts available at reception.



Lochmahon... Adamstown, Enniscorthy

Lochmahon has two fly lakes, the specimen lake has Browns and Rainbows averaging 4-5 Lbs. The 2nd Fly lake is well stocked with 1-2 Lbs Rainbows. The bait fishing lake is well stocked with Rainbow Trout, ideal for families, children, beginner and groups Tackle shop, rod hire, large selection of flie; everything for the trout angler. Fly casting instruction available on request.



Enniscorthy Castle & Vinegar Hill

Overlooking the town of Enniscorthy. Follow in the footsteps of Anglo-Norman Knights, Gaelic Irish Kings and Elizabethan Adventurers as you uncover the story of the Castle. Visit Vinegar hill where the historic battle took place and take in the panoramic view of Enniscorthy and beyond.

www.enniscorthycastle.ie

Ferns Castle

Dating back to c. 1200, this impressive castle has been won and lost in many a battle over the centuries. It has a rich mediaeval heritage, with links to Tintern Abbey and Hook lighthouse. Explore the grounds, climb to the top of the tower to enjoy the spectacular view of the countryside and visit the renowned Fern's Tapestry just next door.

www.fernsvillage.ie



Hook Lighthouse ...Hook Head

The Visitor Centre at Hook Lighthouse is at the tip of the Hook Peninsula. Lonely Planet describes it as one of the top 14 attractions in Ireland. The centre offers guided tours of the lighthouse tower, one of the oldest operational lighthouses in the world.

www.hookheritage.ie



Wexfords Beaches

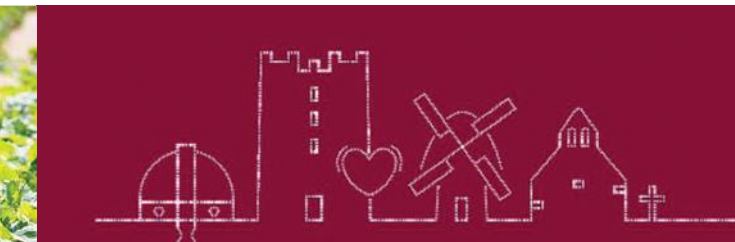
Wexford is located beside the sea, with numerous beaches such as Morriscastle, Curraclloe, Carne, Rosslare, Blackwater, Kilmore Quay, Duncannon and Ballinesker on our door step, we are spoilt for choice. Curraclloe is a blue flag beach, made famous in the opening sequence of "Saving Private Ryan". It is a long wide fine stretch of beach with 3 main entrances. The Raven, located beside Culletons Gap, is an ideal place for a woodland beach walk or a picnic.



Pick your own Strawberries! Berry Farm Clonroche Enniscorthy

We are now in the privileged position of offering the whole-some experience where families are given the opportunity to pick their own strawberries. Pick your own berries at your own pace and engage in the excitement of a real Wexford tradition.

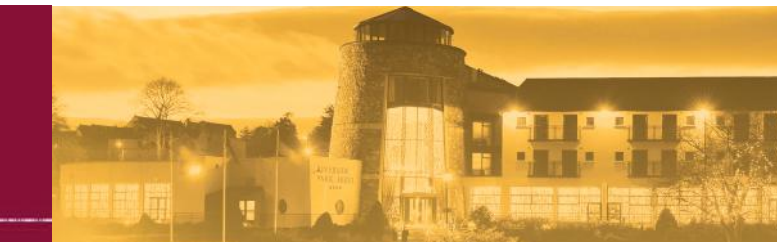
Tel: 087-2859737



Wexford Trails

Garden Trail
Heritage Trail
Norman Way
Craft Trail
Walking Trail

Download a copy of all trails from our Website
www.riversideparkhotel.com



Other attractions

within an hour's drive from the Hotel...

Kilkenny Castle
Waterford Crystal
Glendalough
Avoca

Huntington Castle
Saltee Island
Rothe House
Wicklow Historic Gaol